



Product Pack

M1 **ULTRA**  **LITE**
COMPOSITE FLOOR

M2 **SUPER**  **LITE**
COMPOSITE FLOOR



Helping more people to travel in safety and comfort

M1 Ultra Lite and M2 Super Lite Composite Flooring with Rails.

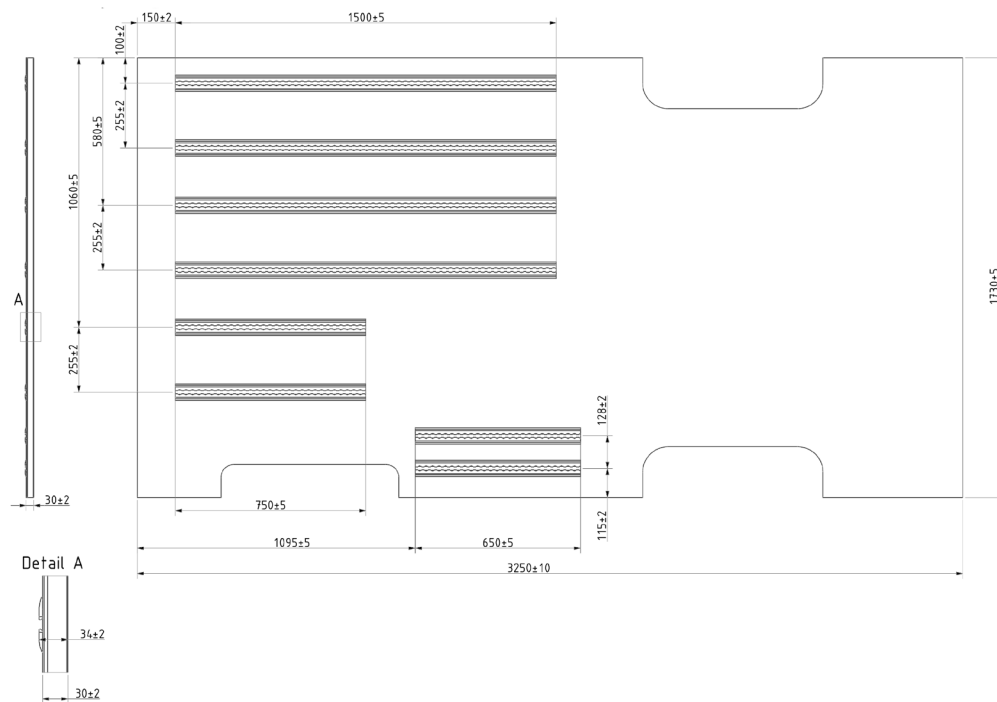
The Lightest Patented Solution on the Market!

Vehicle weight is increasingly becoming a critical factor for all vehicle types and in particular electric vehicles.

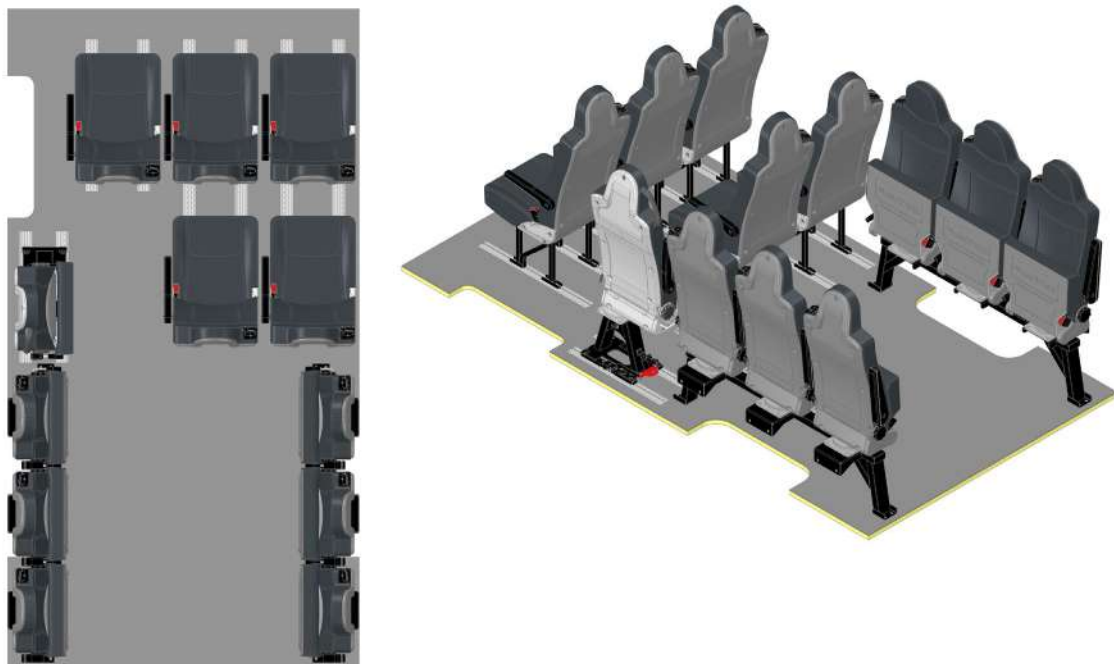
Vehicle builders producing conversions for ambulance, minibus, wheelchair accessible usage or any other application, look no further.

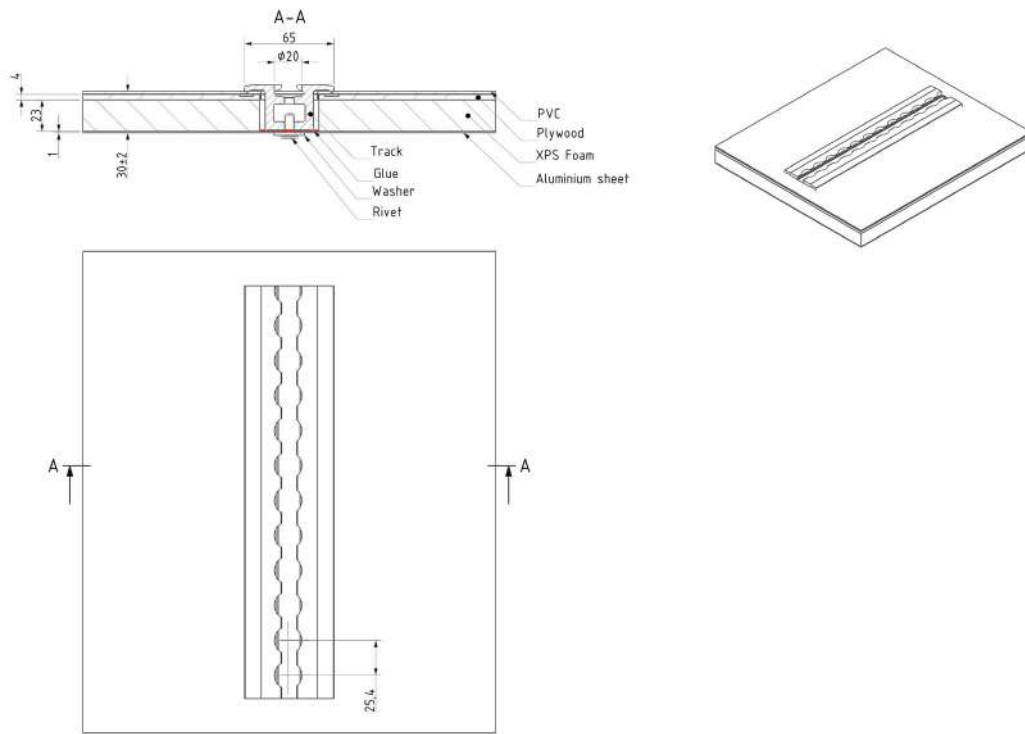


Floor Construction



The floor is supplied in one single piece with rails, the wheel arches cut out and floor vinyl fitted. Flooring is supplied exactly to a drawing supplied following a discussion with the end user customer. This means the tracks can be positioned anywhere – no restriction on track pitch at all.

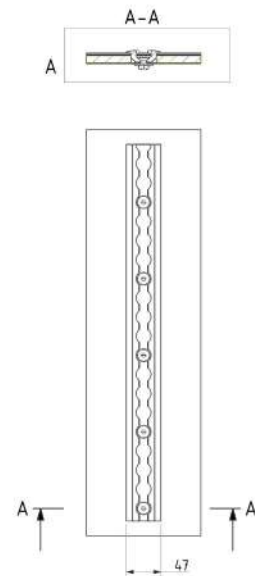
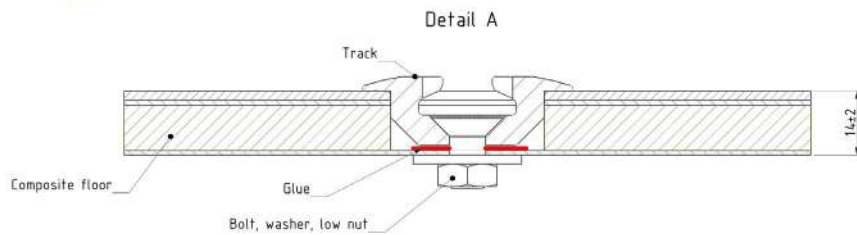
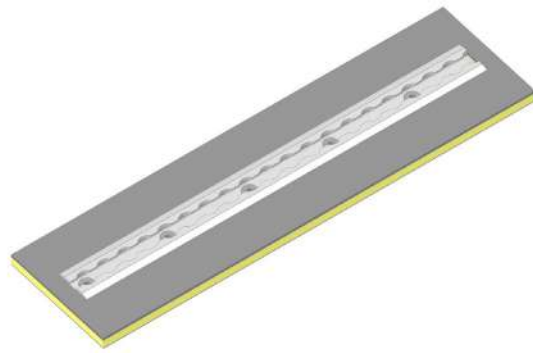




M1 **ULTRA** **LITE** COMPOSITE FLOOR

As the Ultra Lite floor solution comes fully prepared for installation, it is ideally suited for long production runs and of course saves a significant amount of weight.

Suitable for vehicles with multiple tracks for flexibility or supplied as a pad for a small number of vehicle seats.

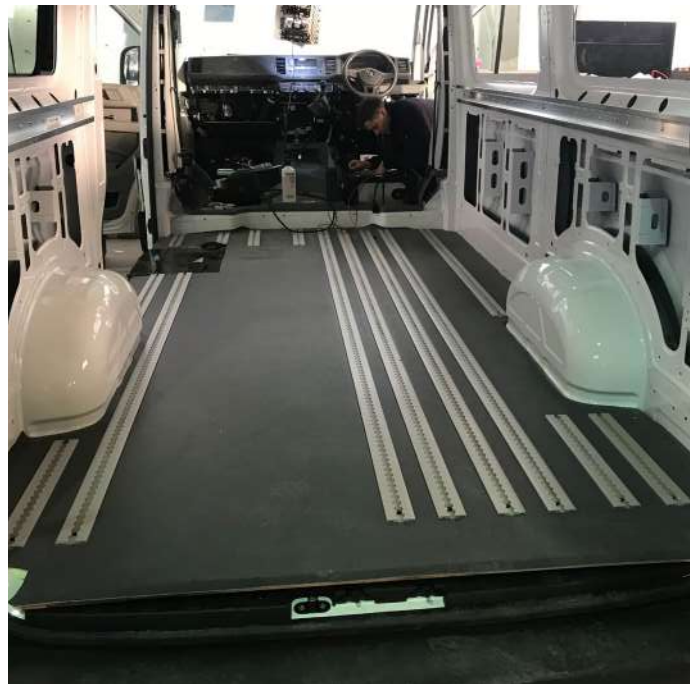
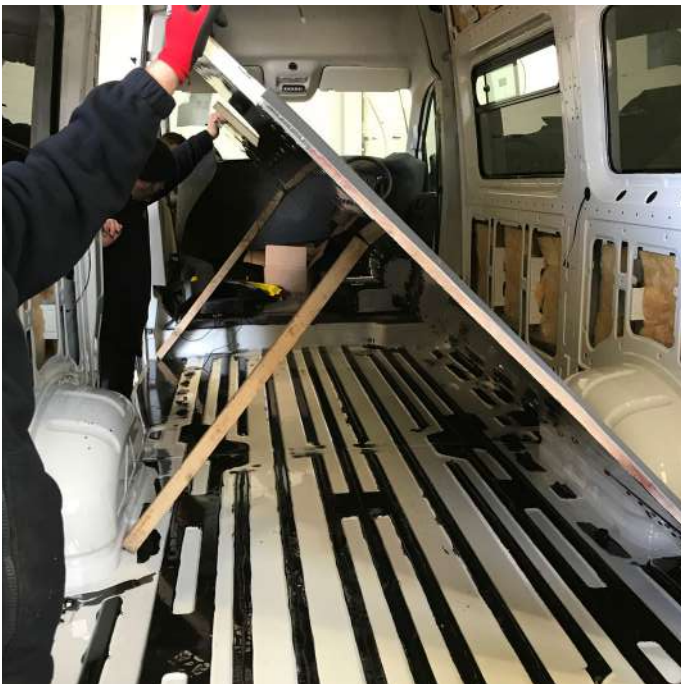


M2 **SUPER LITE** COMPOSITE FLOOR

On M2 Super Lite floors, the screws in the tracking go through the composite floor but not through the van floor. We position the tracks to sit in the channels of the van floor as much as possible.

M2 Super Lite floor requires no additional under floor fixings at all (just bonding), giving even quicker installation time and is perfect for electric vehicles in particular.

Installation Process



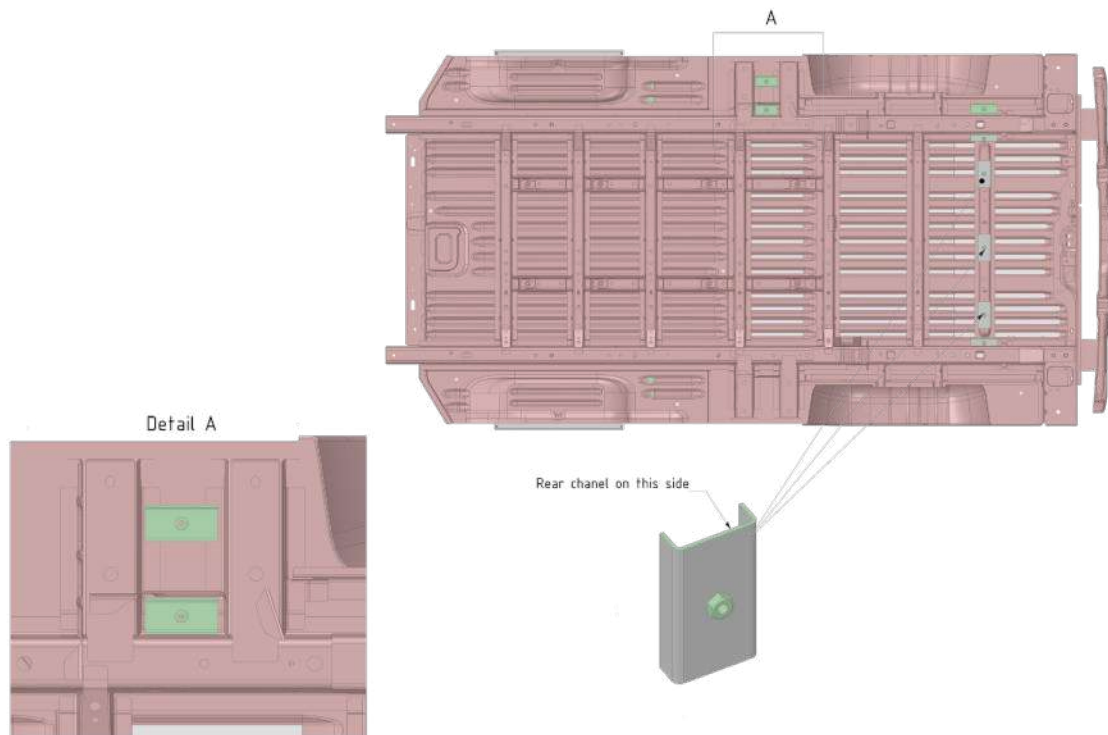
First clean the van floor and use primer on underside of the composite floor.

The flooring is then bonded to the existing van floor.

For the M1 Ultra Lite floor, NMI supplies the necessary fixing kit to suit the vehicle and also the correct amount of primer, cleaner and glue for the installation.

M2 Super Lite floor is bonded but requires no fixings.

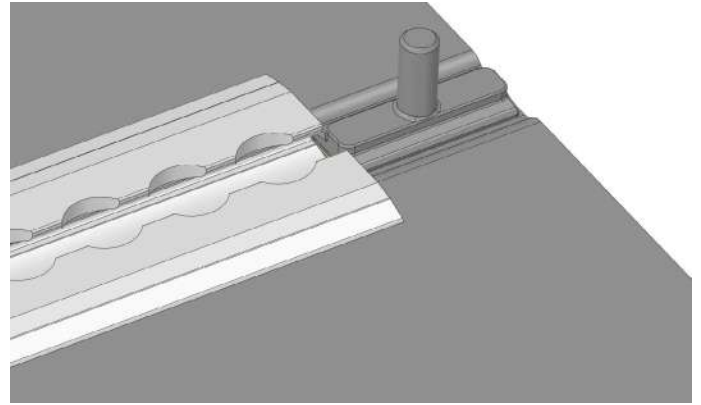
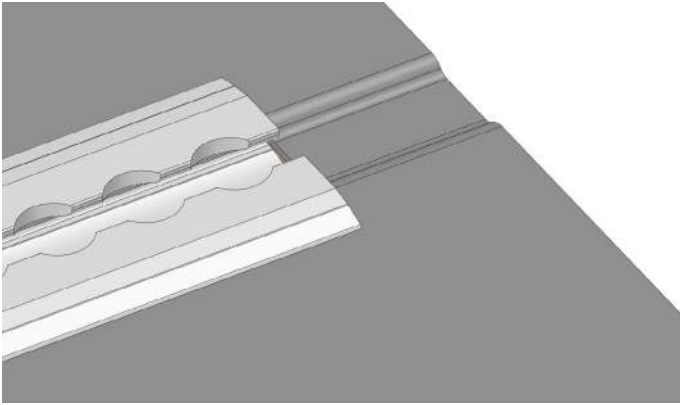
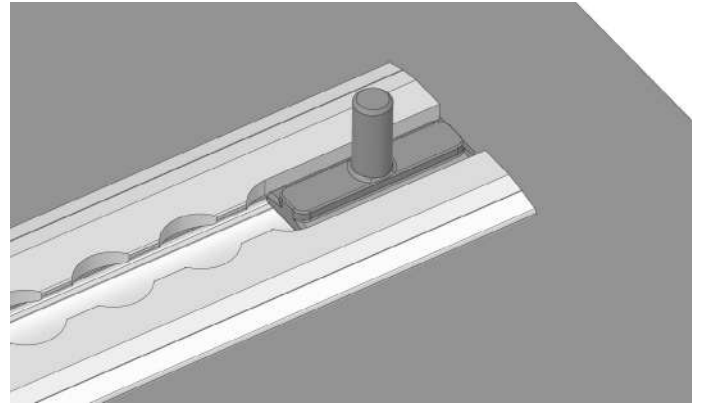
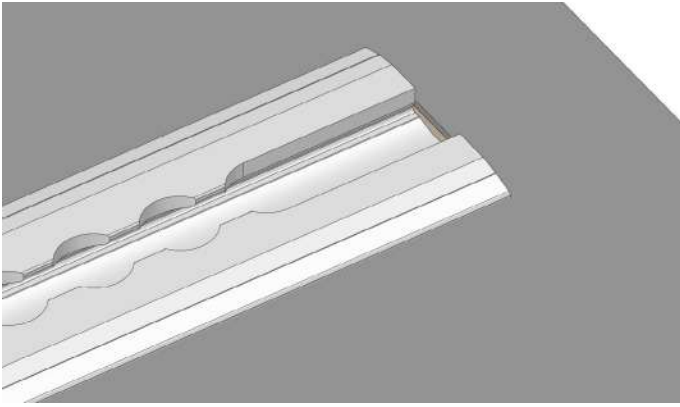
Engineering Details



We design and supply all the necessary underfloor fixing as required per vehicle chassis type and floor ordered.



For M1 Ultra Lite flooring we can supply and fit a supplier side step to sit inside the floor.



For use with NMI T Bolts we offer 2 options for insertion into the rails, as shown above.

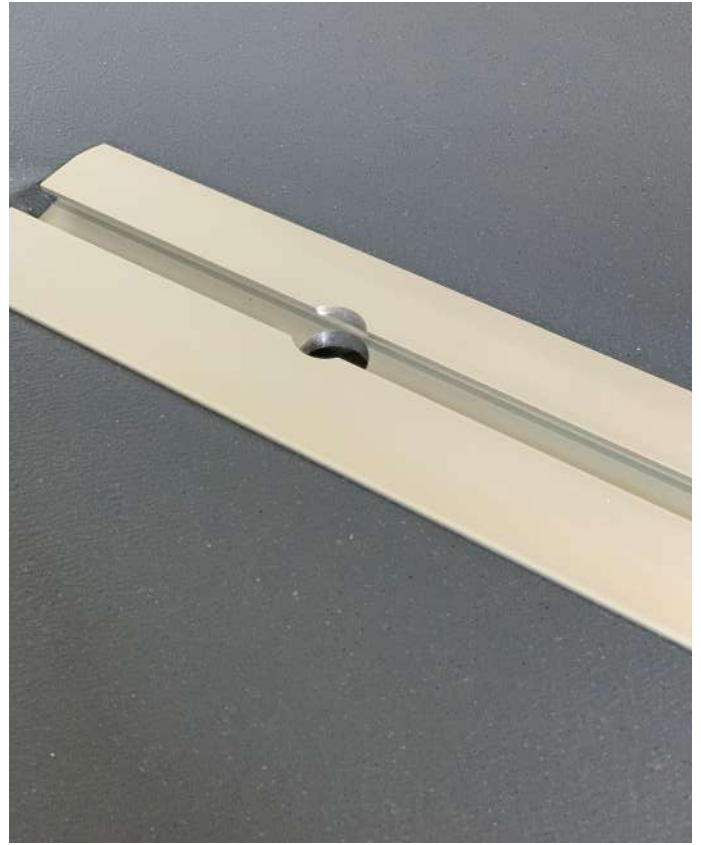
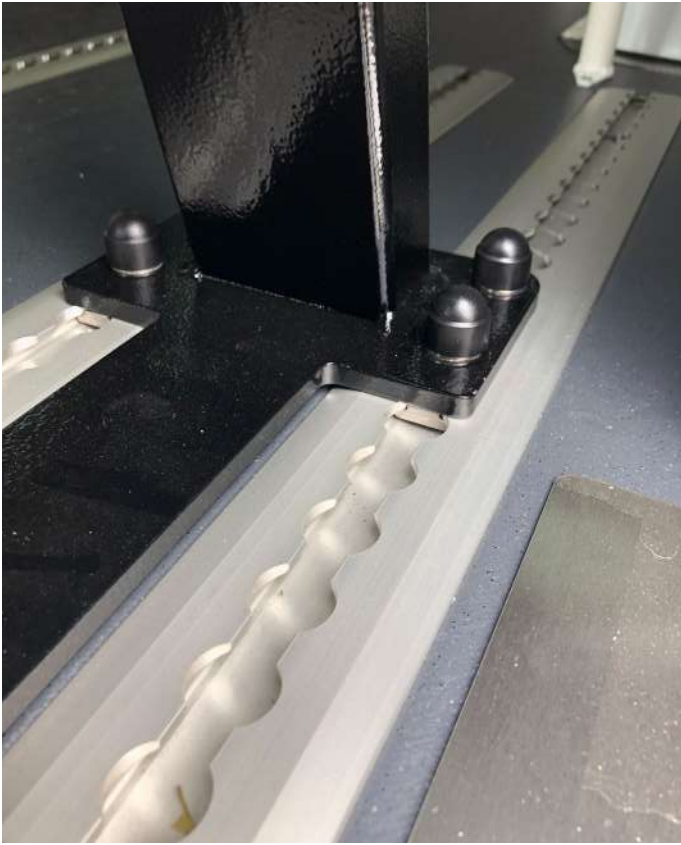
Accessories



We offer rubber insert as shown.



End caps are supplied fitted with the complete floor.



We have test papers for the majority of vehicle makes and a growing range of manufacturers seating options.



All NMI products are tested in NMI flooring and comply to regulatory standards.



The Ultra Lite floor can be supplied in short pads as shown. Ideal for mess and crew van application. Additionally we offer a one piece bulk head as part of a pack.

Did You Know?

We have a large range of vehicle safety products

Contact us to find out more or request a product pack.

Seat Fittings
Product Pack

SEAT FITTINGS



SitSafe Product Pack

SiT Safe
Incorporating a Child Safety Seat



OTF Stretcher Track Lock
Product Pack

OTF ON THE FLY
STRETCHER TRACK LOCK





+44 (0) 208 801 5339 / 5512
www.nmisafety.com / sales@nmisafety.com

NMI Safety Systems Ltd. Registered in England and Wales No. 01315858
16 IO Centre, Arlington Business Park, Whittle Way, Stevenage, SG1 2BD