



SEAT FITTINGS

Product Pack



Helping more people to travel in safety and comfort

SEAT FITTINGS

Flexibility for in Vehicle Seating

We design, patent and manufacture a large range of seat fittings, lockables and seat legs to allow for the safe, quick insertion and removal of seats from vehicle floor tracking.



The NMI range of products is suitable for use in all vehicle types - from minibus conversions as above to ambulances, coaches, taxis, etc.

Seat Fittings / Legs Examples



Millennium legs and fittings. The easiest to use fitting - tried and tested - with simple one handle lever lock and release.



Single Interleg shown on T Bolts suitable for all seat types.



A Leg - Over wheel arch leg solution for seats with tip up cushion and swivel.

Millennium fittings are available with wheelie wheels to easily manoeuvre seats within or on/off the vehicle.

- Available with red or black handles
- Millennium legs available to order with different top rails to suit different seat manufacturers
- Available in different heights
- Available in black or grey
- Standard height is 285mm



You can clearly see when the fittings are locked in the tracking. With safety drop lock for added security.

U**U Fitting Lockable**

The lightest lockable with foot pedal lock and safety release tab. Available with different braced seat leg types.

**V****V Fitting Lockable**

The best solution where seats are required to slide along in the floor tracking and then lock in position. Available with different seat leg types. Always supplied as a pair and connected by a single pedal lock with safety plunger.

**W****W Fitting Lockable**

Our most basic and functional lockable for use when the insertion and removal of seats from tracking is infrequent.

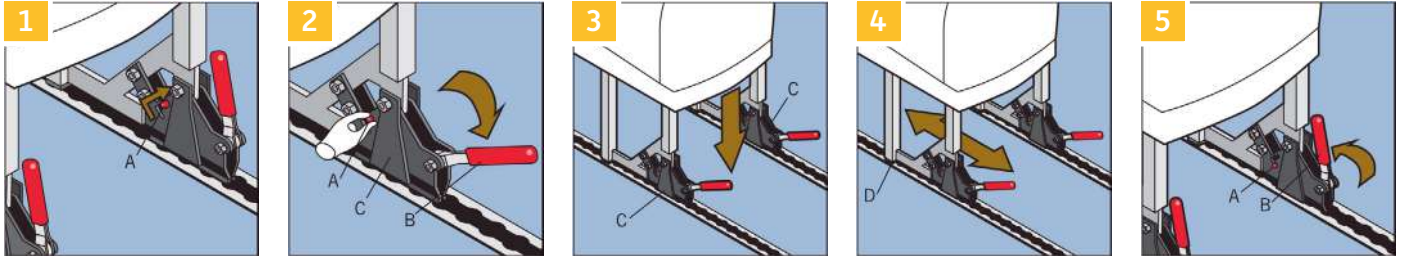
**T****T Bolts**

Our range of six types of T bolt is a robust and cost effective way of locking seats into a fixed position in floor tracking.



Installing a Seat With Millennium 2 Seat Fitting

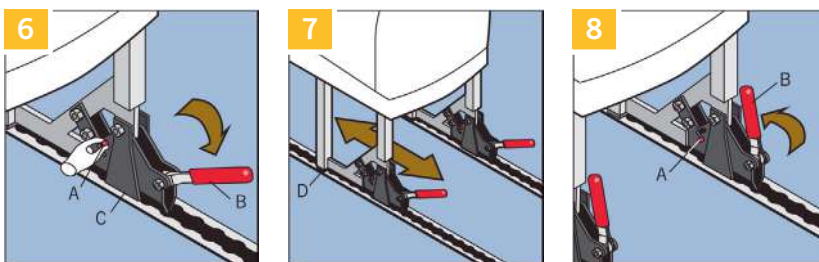
Positioning the seat, preparing the fittings, inserting them into the tracking, adjusting positioning and securing.



- 1** – Align the seat legs resting them on the floor tracking. Lift safety bolt (A) to its upper position.
- 2** – While holding safety bolt (A) in its upper position, pull handles (B) away from the Millennium 2 fitting (C) to unlock. The seat is now unlocked and ready to be inserted into the tracking.
- 3** – Insert the Millennium 2 Seat Fitting (C) into the tracking.
- 4** – By gently tilting the seat forward onto the plastic pads (D) at the front of the seat, slide the seat back and forth to your preferred position. Legs with front Spigot must sit in the track hole in your preferred position.
- 5** – Close handles (B) to lock the chair in its new position. The safety bolts (A) should rest in their lower position. Repeat on other leg. The chair is now secure.

Unlocking Seat for Repositioning or Removal

Unlocking the seat, sliding its position and resecuring the seat.



Please Note:

When not in use in tracking, leave the Millennium 2 Seat Fitting in the unlocked position.

- 6** – While holding safety bolt (A) in its upper position, pull handles (B) away from the Millennium 2 fitting (C) to unlock. Repeat on other leg. The seat is now unlocked and ready to be slid in the rails or removed by lifting it out.
- 7** – By gently tilting the seat forward onto the plastic pads (D) at the front of the seat, slide the seat back and forth to your preferred position. Legs with front Spigot must sit in the track hole in your preferred position.
- 8** – Close handles (B) to lock the chair in its new position. The safety bolts (A) should rest in their lower position.

Securing the U Fitting



1 – Line V Fitting with track

2 – First drop front 'L' bracket (A) into a hole in the track and then drop fitting into the track so they are flat.

3 – Push seat forward until (A) is at the front of the track hole.

4 – Push down the foot pedal clamp (B). Yellow drop lock (C) will engage against the main body.

Check (D) is against the bottom of the slot. The U Fitting is now locked.

* Please Note:

If the fitting is not in the correct position, the pedal clamp (B) will not clamp and the safety lock (C) will not be in the lowered position.

Removing the U Fitting



1 – Apply pressure down on foot clamp (B) and lift up yellow drop lock (C). While holding (C) lift up pedal clamp (B).

2 – Slide the fitting backwards as far as it will go.

3 – Lift the U Fitting from the tracking.

Quick Lock System

Allows you to move your seat back and forward. It is not intended for sliding seat along the entire length of rail.



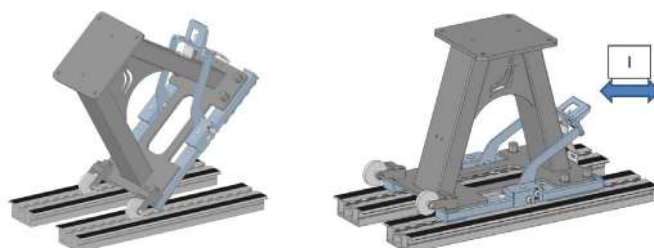
0 - Unlocked Position

1 - Locked Position

2 - Locked Position + Eliminated Clearances

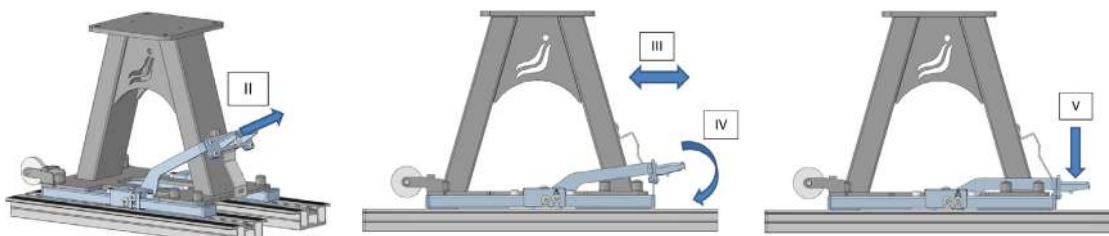
Putting Seat Into Floor

Identify where seat will be located on the rail. Place lever in 0 position - in 0 lever will hold automatically. You could use wheels to move seat. When lever is in 0 position you could move seat (I) to correct target position. When you move seat to target position you could place seat in rails.



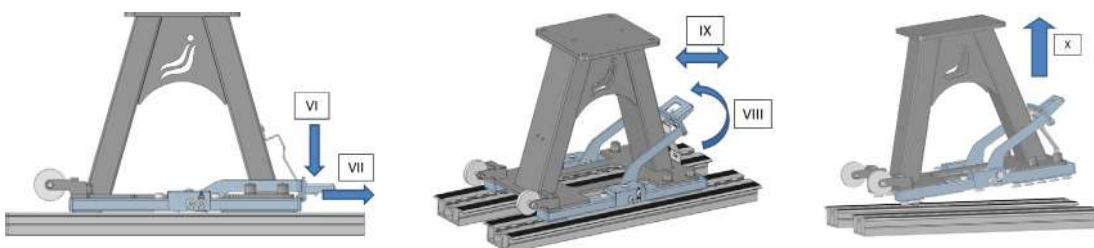
Locking Seat

To lock a seat you have to pull a plunger (II). Move seat about 10mm (III) until lever place to 1 position (IV). Press lever to eliminate clearances (V). Lever will hold automatically in 2 position.

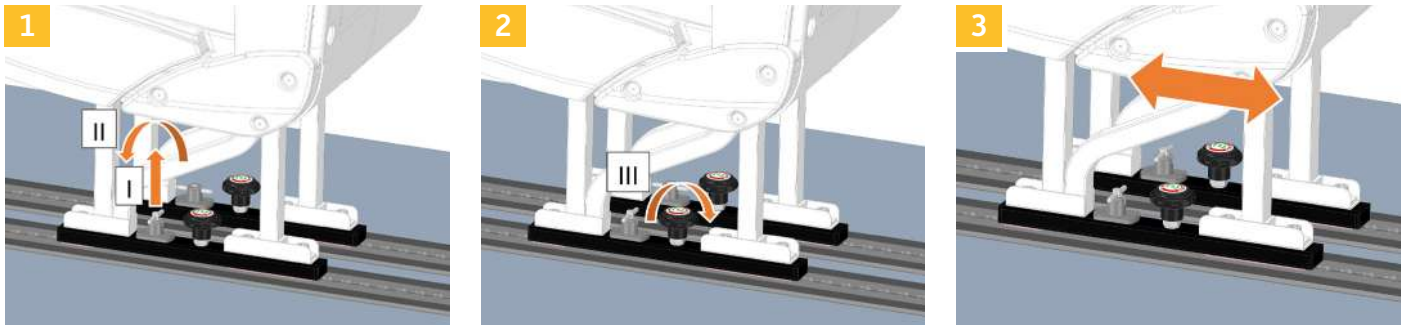


Disassembly of the Quick Lock

To remove seat press the lever (VI). Hold lever and pull indexing plunger (VII). Then pick up lever to the 0 position (VIII) and move seat about 10mm (IX). Then you could remove seat (X).

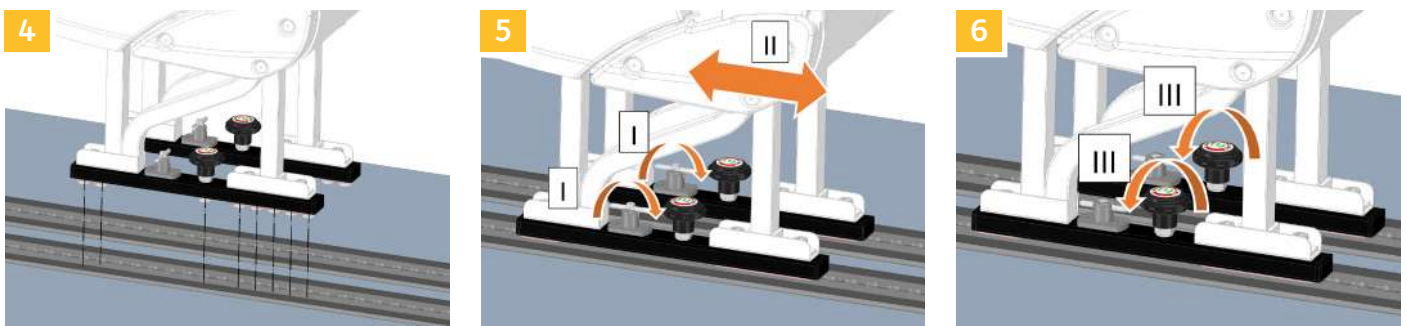


To Unlock and Release from Tracking



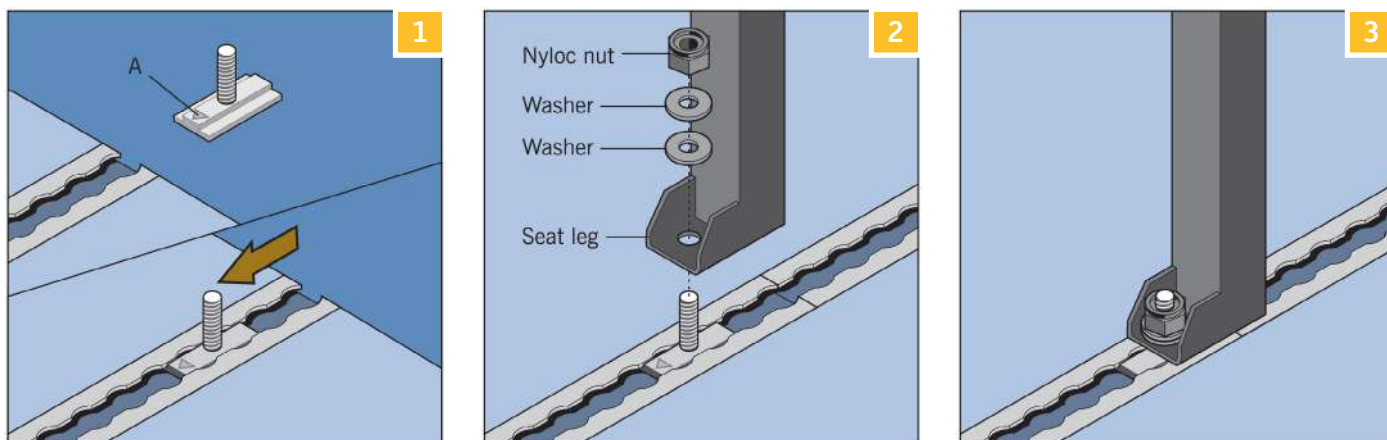
- 1 – Lift and turn pin to keep plunger in its up position and out of tracking hole.
- 2 – Turn plastic handle to release anti-vibration track clamp. Repeat on second lockable.
- 3 – Slide seat forwards half a track hole and tip or lift seat out of the tracking.

Re-Lock in Tracking



- 4 – Place lockables in tracking.
- 5 – Turn pins to drop plunger and then push seat half a hole forward so plungers click and drop into the hole.
- 6 – Turn plastic handle to clamp tight and eliminate vibration.

Fixing a Seat to the Floor Tracking Using NMI T Bolts

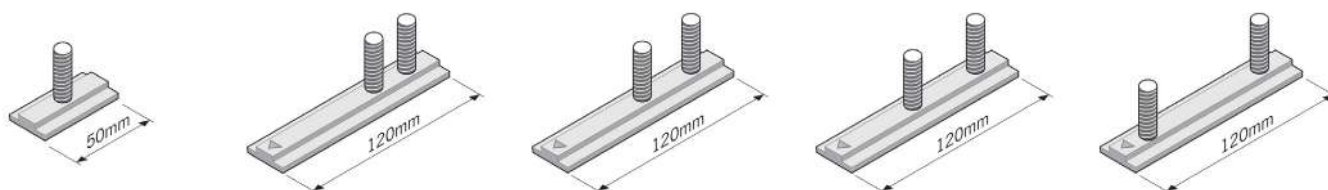


1 – Insert the NMI T Bolt into the end of the tracking ensuring any arrows (A) are facing the front of the seat (e.g. when sat in the seat, the arrows must be pointing in the direction you are sitting) and then slide it along to the relevant position. Please note that tracking and T Bolts may vary from those shown in the image to be compatible with various seats. The T Bolt range is shown below.

2 – The illustration shows the order of items to secure the seat leg to the floor. Place the feet of the seat legs over the T Bolts, then place 2 washers (2mm 10.5ID 19.750D) on each T Bolt and then place on the Nyloc nuts (M10 thread)

3 – Slide the seat into position and then tighten the Nyloc nuts to 30Nm with a torque wrench to secure the seat. To remove/reposition the seat, remove/loosen the Nyloc nut.

NMI T Bolt Range



T1

T25 (25.4mm Pitch)

T35 (35mm Pitch)

T50 (50.5mm Pitch)

T76 (76mm Pitch)

Please Note:

Actual products may differ from illustration

Seat Fitting Leg Options



A Leg T

Produced to suit each vehicle wheel arch type.



Bridge

Shown with tracking on the bridge. Sliding bases (to adjust for seat pitch) fitted to tip up cushion and swivel seats. Produced to customer specification.

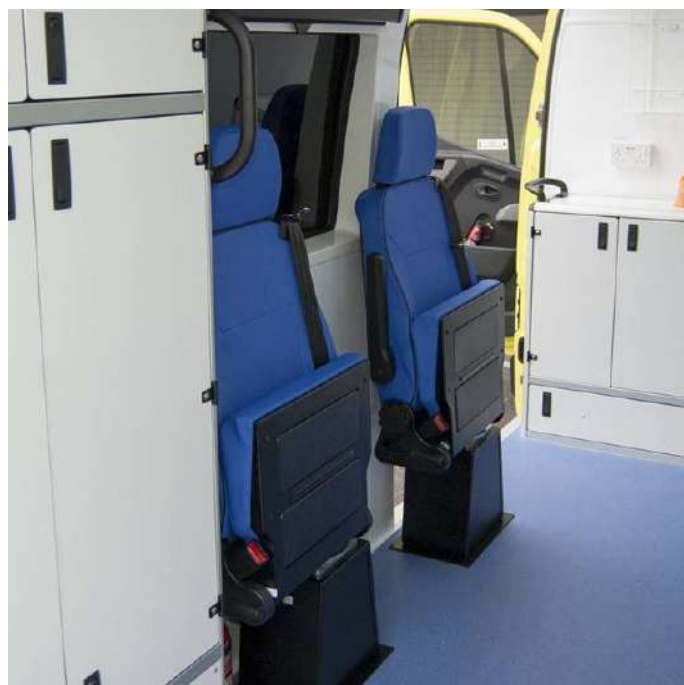


Interleg U V W T

Shown on T Bolts

Height options: 230mm - 320mm

Track pitch options either 128mm or 178mm



Pyramid Base

Fixed base bolted to floor for ambulance vehicle with tip up cushion and swivel seating.



Aero Leg U V W T

Shown on V lockables.

Various height and track pitch options available.



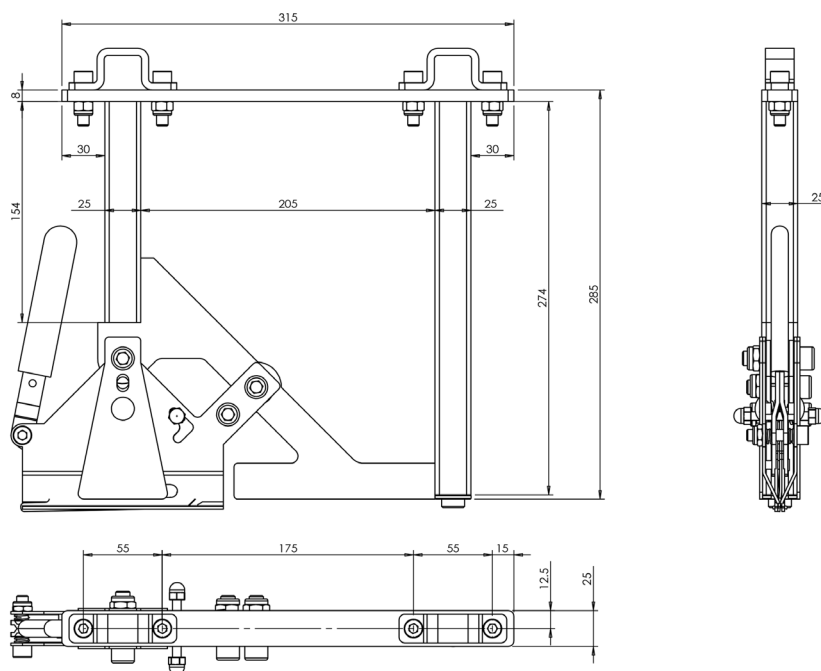
Centro Leg U V W T

Shown on V lockables.

Height options - 285mm, 305mm and 330mm.

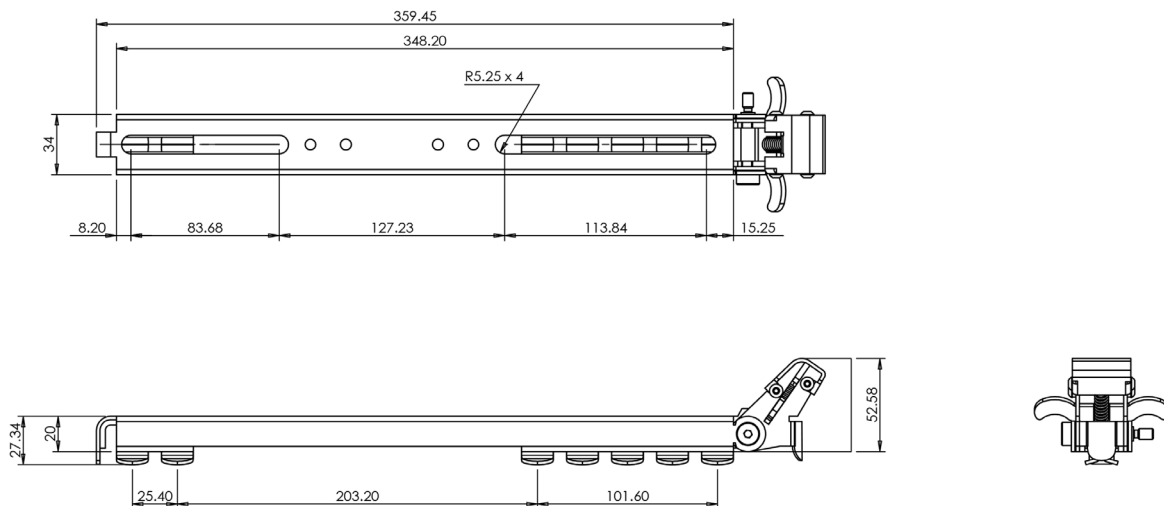
Various track pitch options available.

Technical Drawings of Seat Fittings



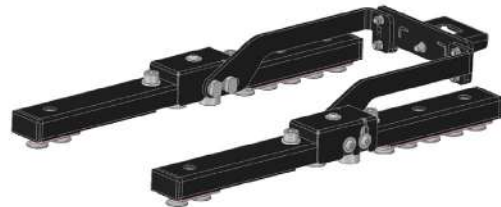
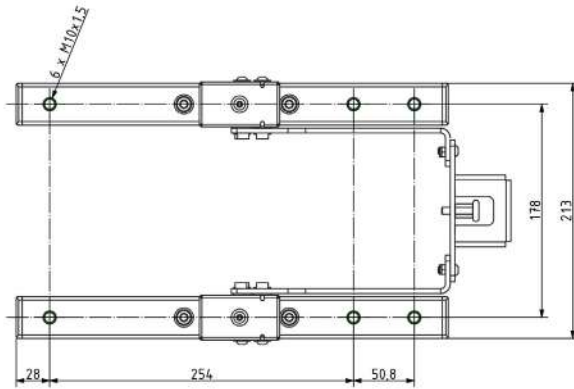
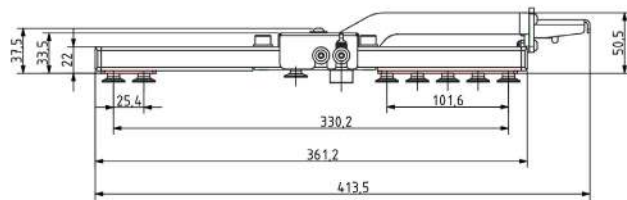
Standard 285mm Leg Assy

Millennium leg and fitting shown with NMI top hat fixings on the top rail for securement of the seat to the legs.



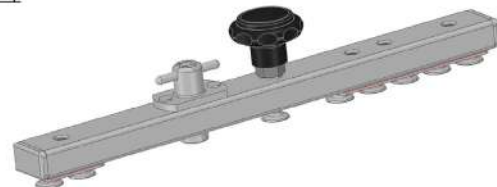
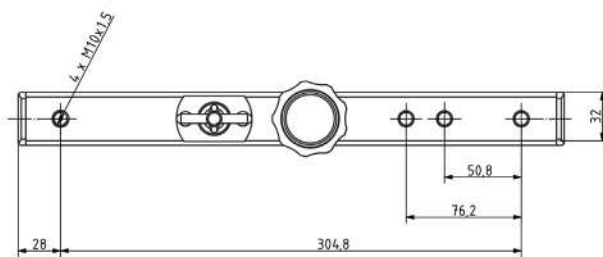
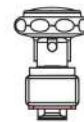
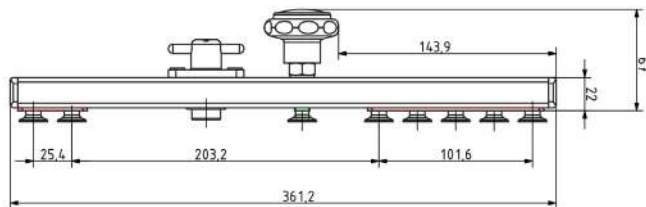
U Fitting

Coated in black and supplied with 2 rear and 1 front fixing to attach to the legs.



V Fitting

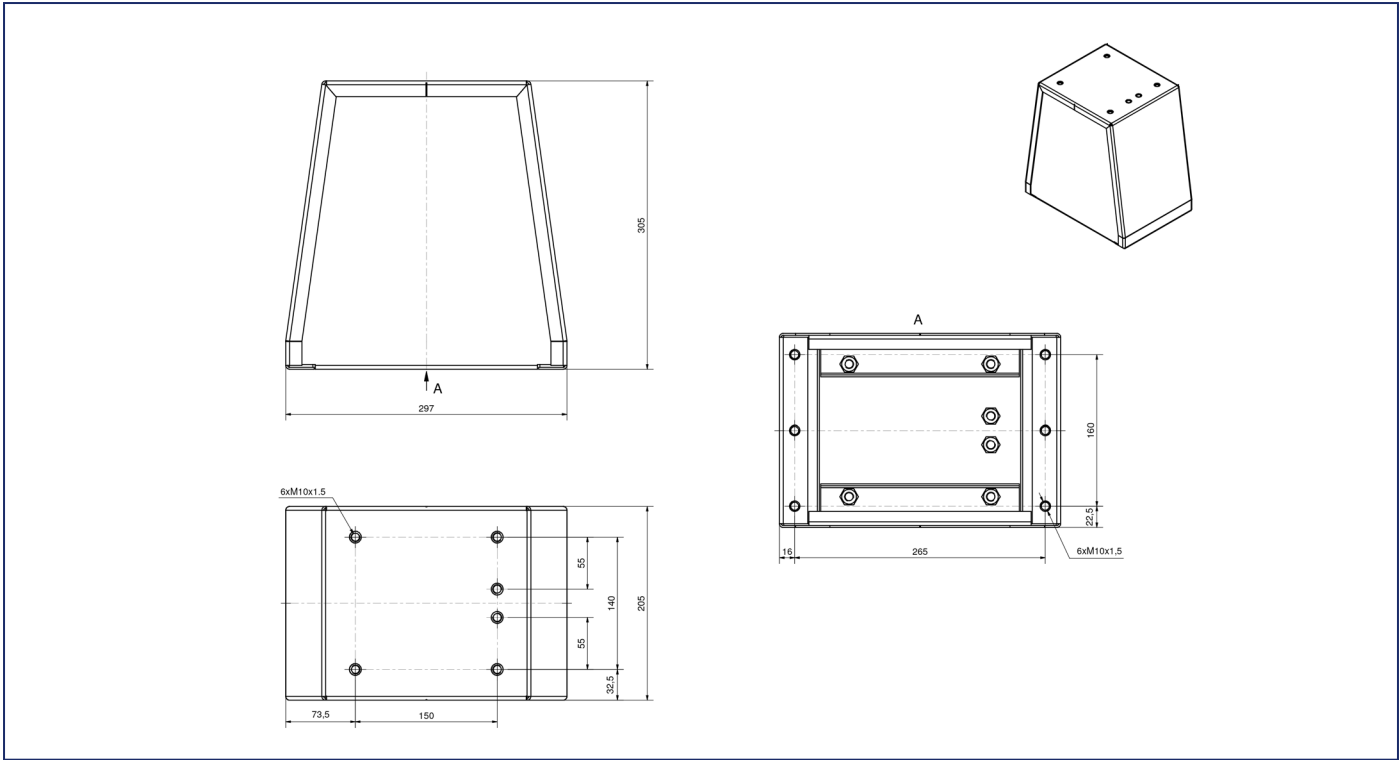
Coated in black with red foot pedal.



W Fitting

Black coated.

All seat fittings/lockables are tested and compliant to regulatory requirements.



Base Pyramid

Notes



+44 (0) 208 801 5339 / 5512
www.nmisafety.com / sales@nmisafety.com

NMI Safety Systems Ltd. Registered in England and Wales No. 01315858
16 IO Centre, Arlington Business Park, Whittle Way, Stevenage, SG1 2BD