



**Product Pack**

**SafeRider**

Back & Head Rest for Wheelchair Users



Helping more people to travel in safety and comfort

# SafeRider

Back & Head Rest for Wheelchair Users

## In Vehicle Wheelchair User Safety

SafeRider must always be used in conjunction with 4 point tie downs to secure the wheelchair and lap and diagonal belts to safely secure the wheelchair user.

The Standard SafeRider should be used in vehicles where the wheelchair shoulder belt is attached to the vehicle wall. SafeRider provides tested back and headrest for wheelchair users. Complimenting our range of RIPS (Rear Impact Protection Seats) SafeRider however is not a vehicle seat or fitted with inertia seat belts.



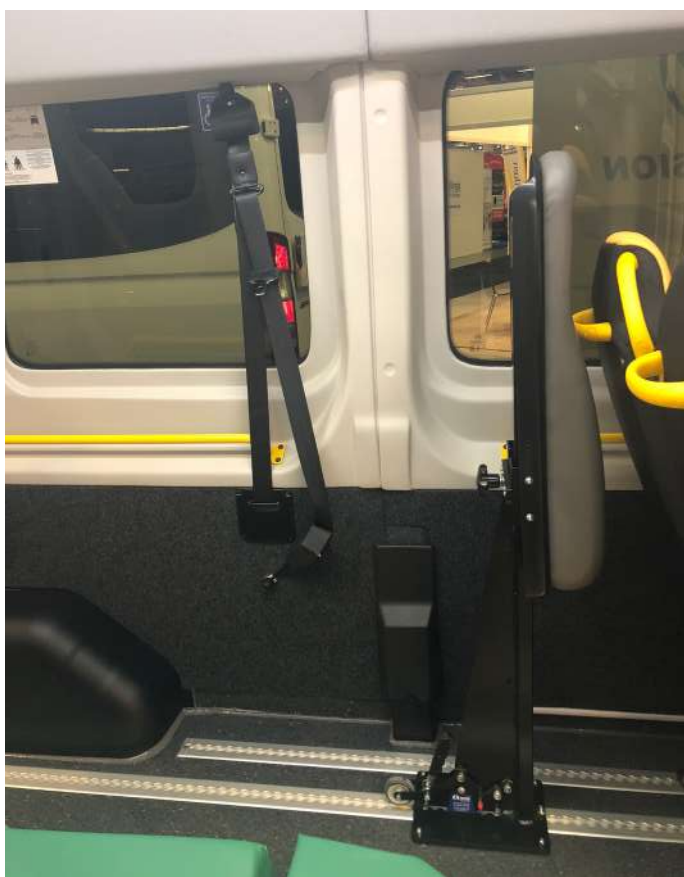


In May 2003, the Department for Transport published a report following an extensive programme of testing to assess the safety of wheelchair users when being transported on all M category vehicles in comparison with travellers seated in conventional seats (fitted with headrests).

The work found that the heads and necks of wheelchair users were particularly vulnerable but that this could be addressed through the use of a head and back restraint. However, such a restraint should meet the requirements of ECE regulation 17 for strength and energy absorption and the wheelchair should fit well up against the head and back restraint for maximum benefit.

The addition of a head and back restraint was found to improve the situation significantly.

## Standard SafeRider and SafeRider Arm



| Standard SafeRider Straight Back Shown

| SafeRider Arm in Folded Position Shown

Saferider locks into the vehicle floor behind the wheelchair users back and head.

Two back types are available: Straight back or Square back.

Saferider with single millennium fitting and wheelie wheel locks into track and is easy to manoeuvre around the vehicle.

The Saferider with side lock fits onto NMI's innovative patented floor pocket, used when floor track is not wanted.

The Saferider seems fixed in the floor, but is fully detachable. (see Magic Seats pack for further details on floor pocket)

The Saferider arm above sits very compactly to the vehicle wall when in the storage position as shown.

It sits bolted to the floor/connected to T bolts or V fittings to slide/lock & unlock from tracking.

Once the wheelchair user is past it and in position with all its securements then the patented Saferider arm simply pivots outwards to sit behind the wheelchair users head. Ideal for single wheelchair type conversions where every bit of space is at a premium.



## Seat Back



The Millennium Ratchet seat back differs from the RIPS as it does not come with a cushion and therefore is not a seat. It will secure a wheelchair and provide the wheelchair passenger occupant belts.

Two lap/diagonal belts are supplied with each seat back as standard but only use both where required. Securement of the wheelchair is using a hand operated ratchet with webbing. The base locates into 255mm track pitch. Designed so that it can be used in the same tracking on the vehicle when a stretcher is not being used. (NMI stretcher lock clamps locate in 255mm pitch track also)

We offer a second version of the seat back to lock onto the patented NMI floor pocket.



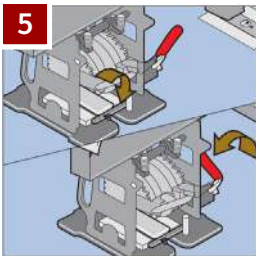
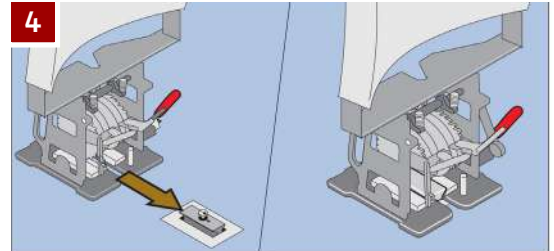
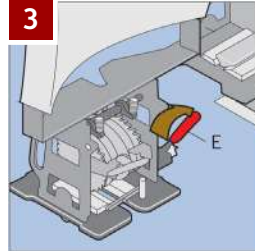
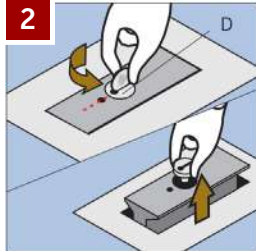
## User Instructions - Millennium Seat Back & Ratchet on Floor Pocket

### Wheelchair User Mode

To be operated by trained personnel only  
Ensure maintenance is carried out at regular intervals

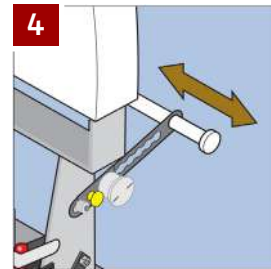
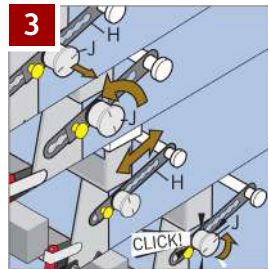
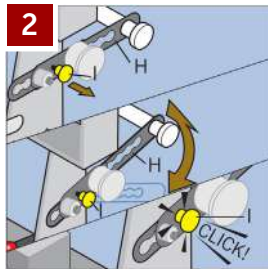


#### Setting up the seat back for wheelchair user mode



- 1** – Tilt the seat back and use the wheels to roll seat into correct position near floor pocket.
- 2** – Raise the floor pocket by turning **D** to align with the dot and then pulling it up.
- 3** – Unclamp wall seat by turning clamp handle **E** away from the seat.
- 4** – Slide the seat back into the raised floor pocket until the auto lock clicks into position.
- 5** – Push the clamp handle towards the seat base to lock.

#### Setting the adjustable adapter beam



- 1** – The wheelchair user can now locate in front of the seat.
- 2** – To adjust the adjustable adapter beam **H** to angle up or down to receive the wheelchair pull plunger **I**. While holding plunger **I** raise and lower **H** to your preferred angle then let go of **I**. **I** should snap in to lock the angle. You may have to alter the angle of the beam to the closest point **I** will snap in. Repeat on the other side of the seat base.
- 3** – To alter the length of adapter beam **H** pull out plunger **J** and rotate 90°. Slide beam **H** to your required length then turn back **J** so the marks line up with the length of the beam. **J** should click back into place to lock, if it does not adjust the length of **H** slightly till it does. Repeat on the other side of the seat base.
- 4** – The adjustable bars can be slid to the appropriate position to meet the wheelchair frame. Repeat on the other side of the seat.



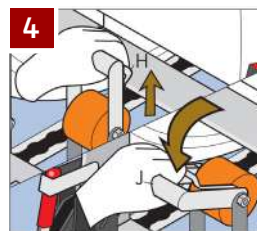
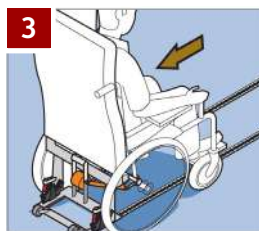
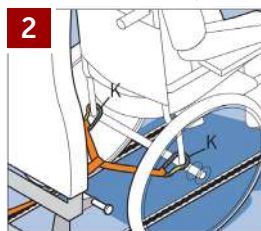
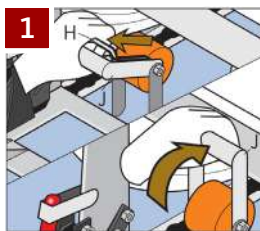
## Securing the wheelchair



Under no circumstances attach karabiners to the front of the wheelchair.

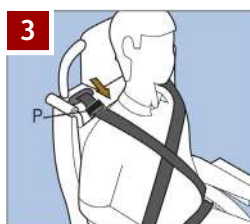


Check there is no slack in webbing and wheelchair frame is against adjustable bars.



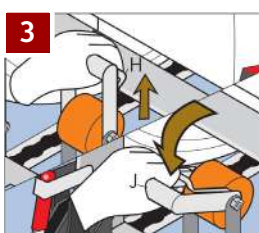
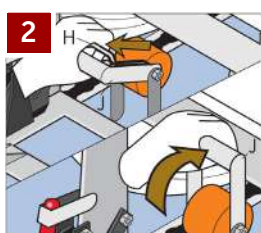
- 1** – To open the ratchet squeeze bar **H** to unlock and lift handle **J** up and forward to uppermost point and then let go.
- 2** – Pull the karabiners **K** from the front of the seat base and attach to the rear of the wheelchair frame as low down as possible on the wheelchair manufacturer's recommended securement points.
- 3** – Reverse the wheelchair against the seat back. Ensure the adjustable bars are against the frame.
- 4** – To engage ratchet squeeze bar **H** and lower handle **J** down midway and then let go.
- 5** – Ratchet the wheelchair in tight by holding main handle **J** and moving it up and down. When webbing is secure lower handle **J** to its lowest position.

## Securing the wheelchair

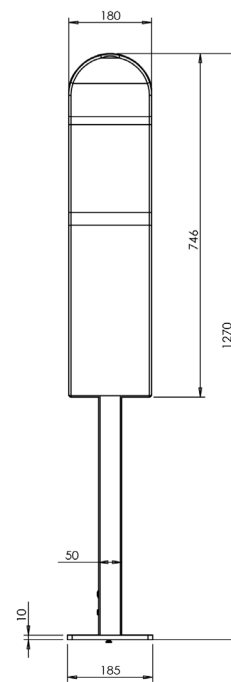
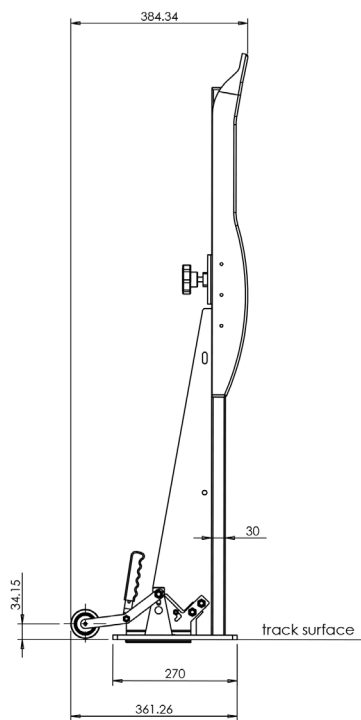


- 1** – Secure passenger using the two all age inertia belts. Insert belt into the opposite buckle.
- 2** – Repeat using other belt, fixing it into the opposite buckle on the other side of the seat.
- 3** – Position age adjuster **P** to ensure webbing does not cut across the occupant's neck.

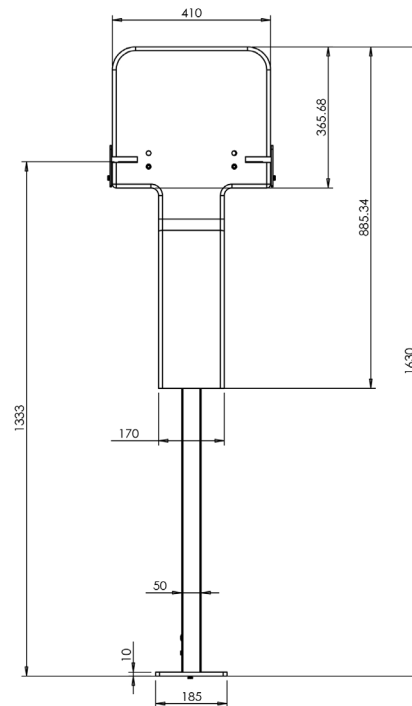
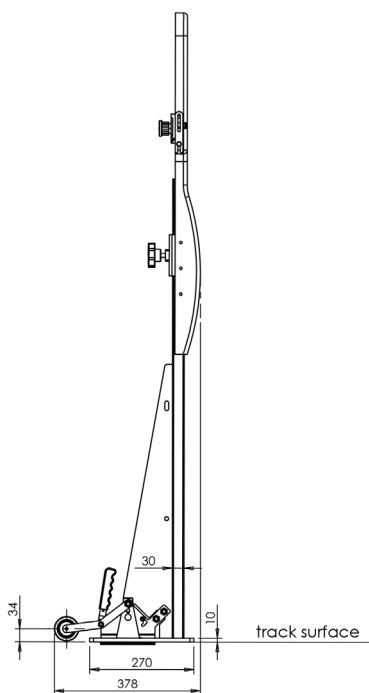
## Releasing the wheelchair user and the seat back



- 1** – Remove the two all age inertia belts.
- 2** – To open the ratchet squeeze bar **H** to unlock and lift handle **J** up and forward to uppermost point and then let go. Unclip the karabiners from the wheelchair.
- 3** – The wheelchair and its user should now be free. To engage ratchet squeeze bar **H** and lower handle **J** down midway and then let go.
- 4** – Ratchet the webbing in by holding main handle **J** and moving it up and down.
- 5** – To release the seat back, follow steps in first section on previous page in reverse. NB push down the silver tab to release the auto lock and slide the base off the pocket.

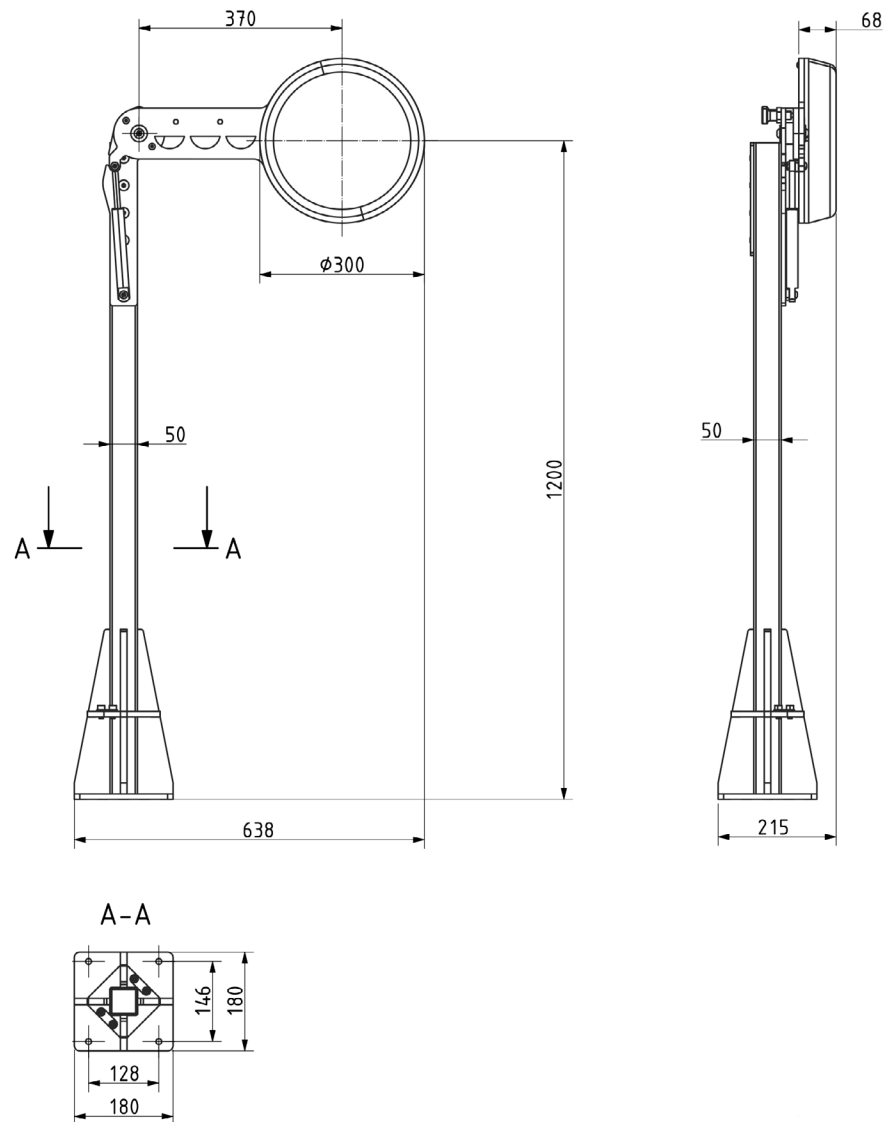
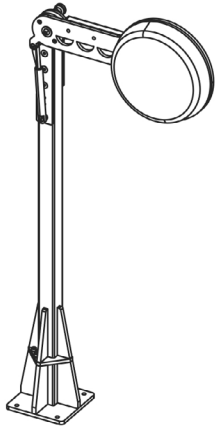


## Standard SafeRider Straight Back



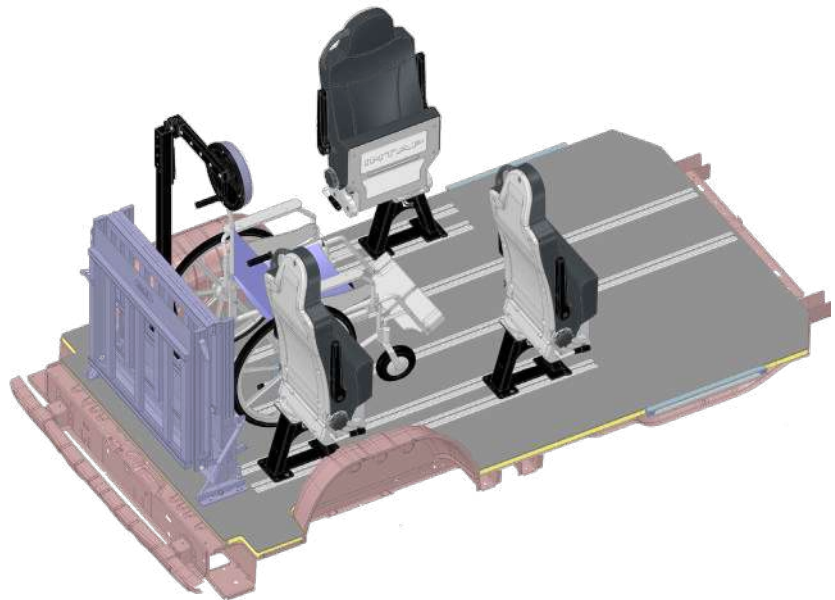
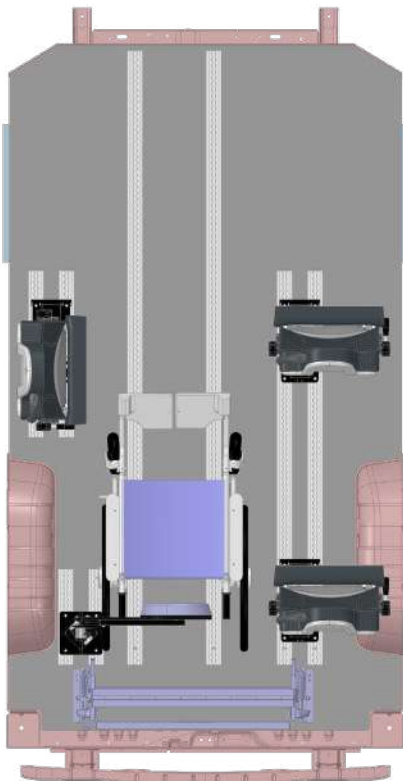
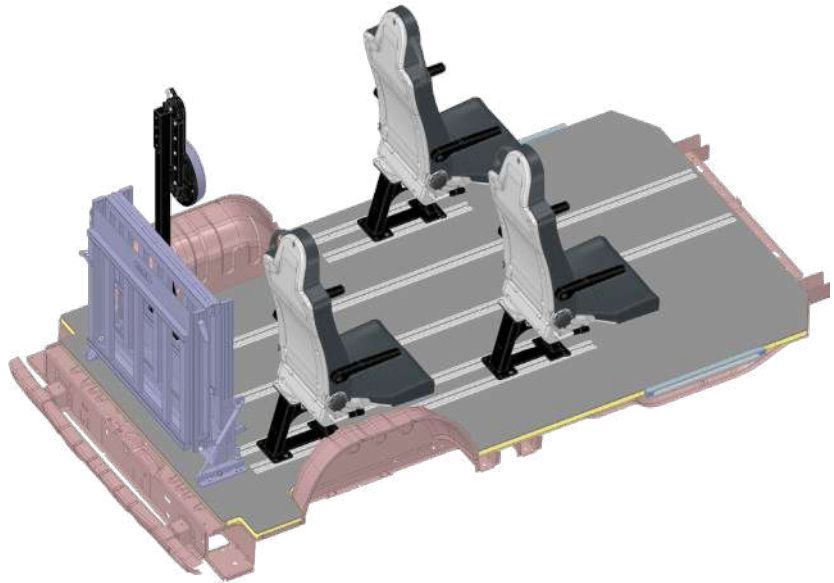
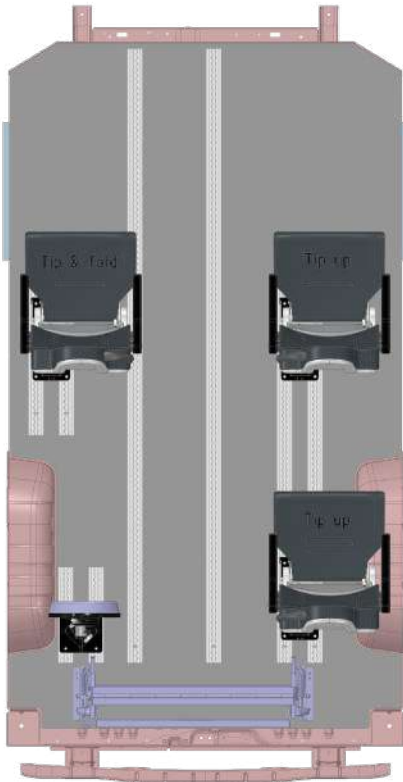
## Standard SafeRider Square Back

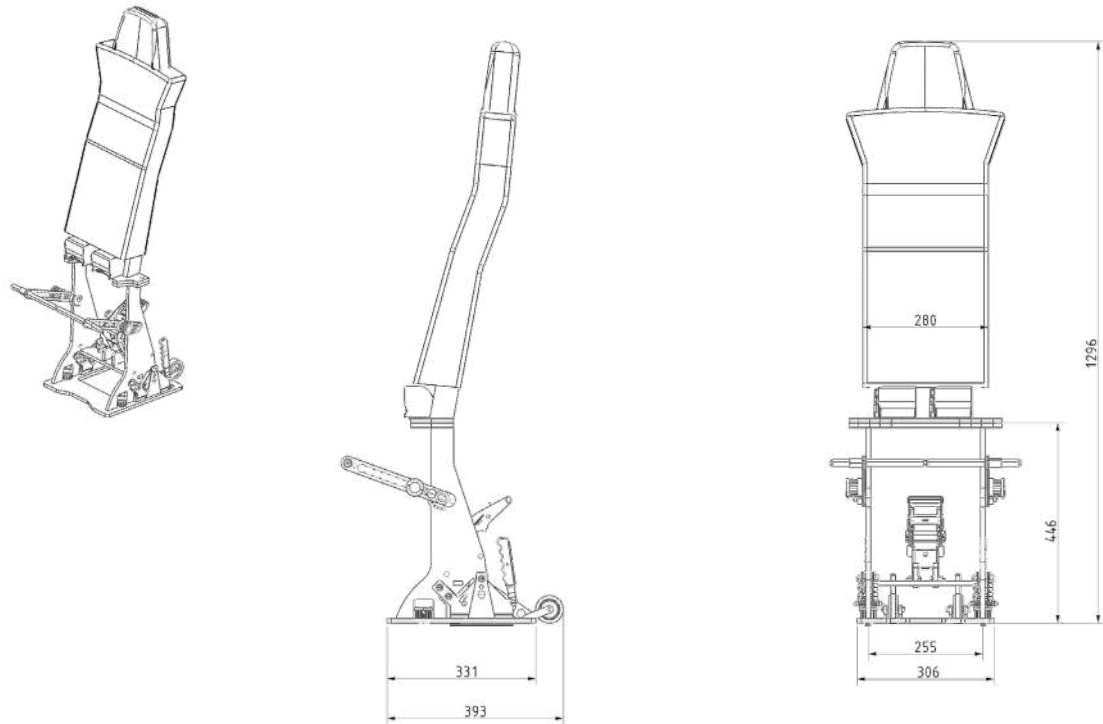




## | SafeRider Arm

More on next page ...





## Seat Back 255mm Centres

### Did You Know?

## We have a large range of vehicle safety products

Contact us to find out more or request a product pack. Only a couple shown below.







**+44 (0) 208 801 5339 / 5512**  
[www.nmisafety.com](http://www.nmisafety.com) / [sales@nmisafety.com](mailto:sales@nmisafety.com)

NMI Safety Systems Ltd. Registered in England and Wales No. 01315858  
16 IO Centre, Arlington Business Park, Whittle Way, Stevenage, SG1 2BD