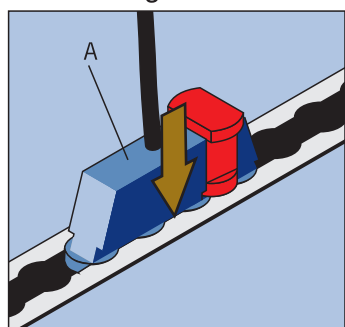


Standard NMI Lap & Diagonal Inertia Belts: User Instruction Leaflet

To be operated by trained personnel only

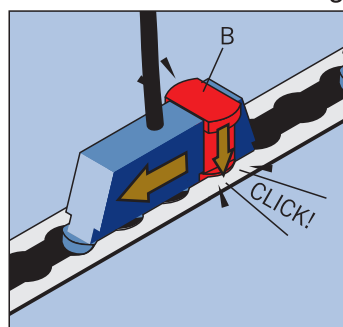
Setting up and applying the passenger safety belts

1: Mounting reel and stalk features to the floor tracking



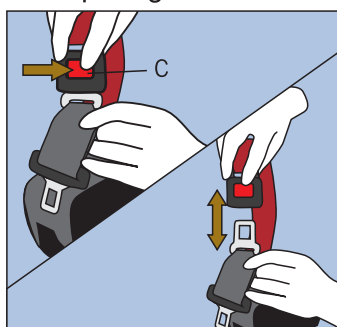
Mount the reel and stalk devices by inserting the Plunger Stud Fitting (A) into the floor tracking

(Install the straps device with the burgundy seatbelt nearest to the rear of the wheelchair)

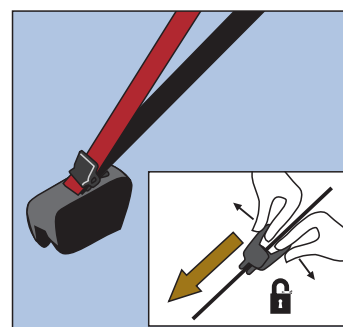


Slide the Plunger Stud Fitting until plunger B drops into a hole in the floor tracking. The device is now locked in the floor tracking

2: Preparing belts



Separate belts by pressing buckle button C and while pulling apart



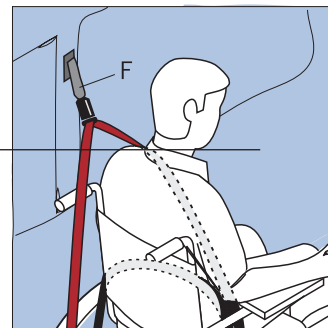
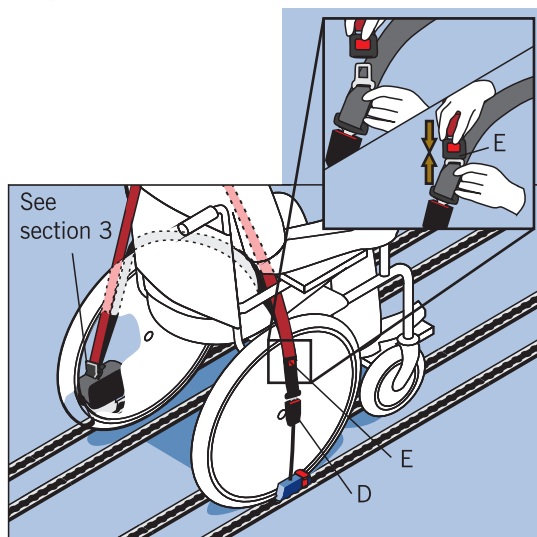
Unlock comfort clip by pulling the two larger ends apart

3: Applying the passenger safety belts

Pull black strap nearest the wheelchair up and across lap of passenger, passing strap through sides of wheelchair for maximum security and put into the stalk buckle D

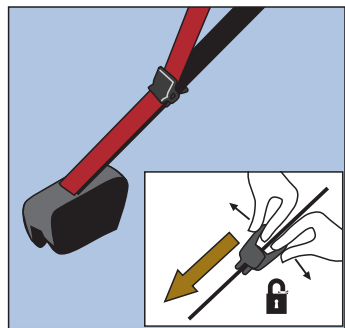
Pull the burgundy strap up and over shoulder, diagonally down across chest and reconnect the two belts (E)

Adjust the comfort clip to be positioned and locked against the casing. This alleviates downward pressure on the occupant's shoulder and stops the belt cutting across the neck (see Section 3)

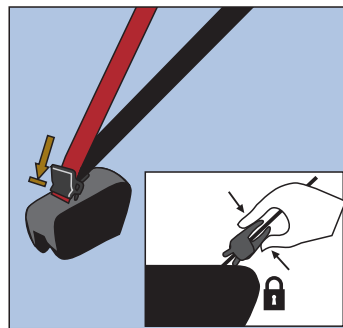


The combined restraint is supplied with an additional tongue on the shoulder belt and this should be used in conjunction with an extension belt F. If the occupant belt is too short, the extension belt clips into the inertia tongue and goes from the shoulder and locks into the vehicle wall.

4: Adjust comfort clips

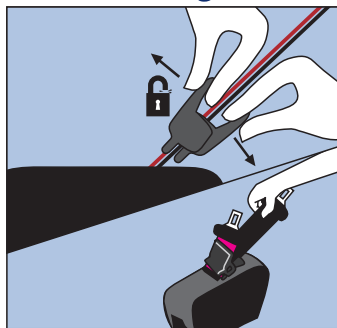


Unlock comfort clip by pulling the two larger ends apart

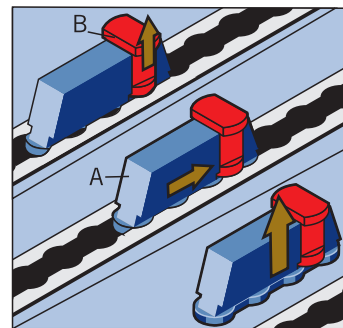


Once clips are at the bottom they can be locked by pushing the two larger ends together. These will make the belt straps feel less tight for the user. The passenger is now secure

Releasing the passenger & removing the restraint devices



To release the passenger unlock the comfort clip. Disconnect burgundy strap from black belt and **hold strap until its retracted into the reels to avoid whiplash.** Repeat when unbuckling the black belt



To remove the reel and stalk features pull up Plunger B, slide Plunger Stud Fitting A till the unit aligns with the holes in the track. When aligned the device can be lifted out



REMEMBER

You have only secured the wheelchair passenger. The wheelchair must be secured independently.