

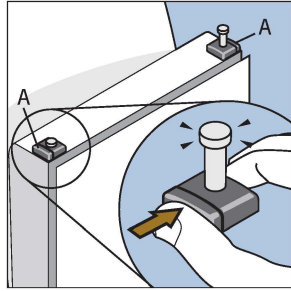
# NMI Rotating King RIPS Mk2:

## User Instruction Leaflet

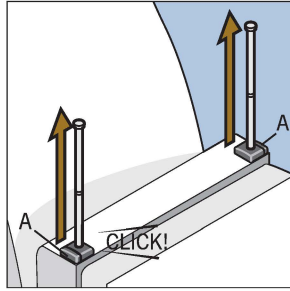
To be operated by trained personnel only. Ensure maintenance is carried out at regular intervals.

### Turning seat into wheelchair user mode

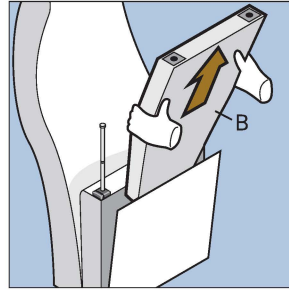
#### 1: Setting up the seat back for wheelchair user mode



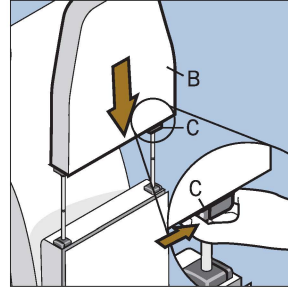
Squeeze A to get the extension stalks to pop up



Keep squeezing A and slowly pull stalks up until they click into the second groove and stay in position

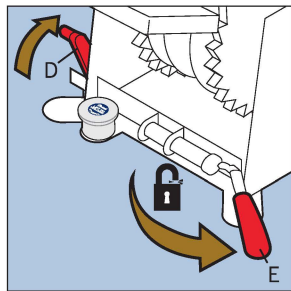


Remove extension cushion B from elastic pouch

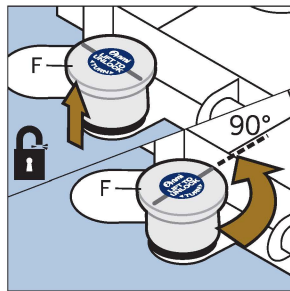


Align the holes in the bottom of B with the stalks, squeeze C located on one side to pop onto the stalks and push down cushion B into position

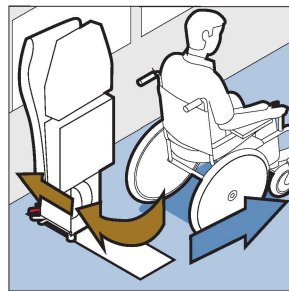
#### 2: Moving the seat aside to let the wheelchair user past



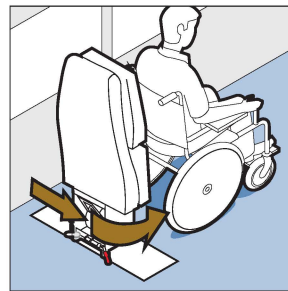
To unlock lift up latch lock D and hold up whilst unclamping E by pulling away from the base to its furthest point



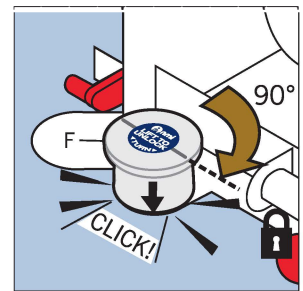
To rotate the seat lift plunger F and rotate 90°



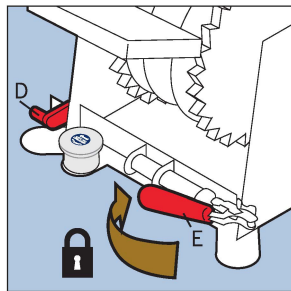
Rotate and slide the seat base to the side. The wheelchair user can now pass.



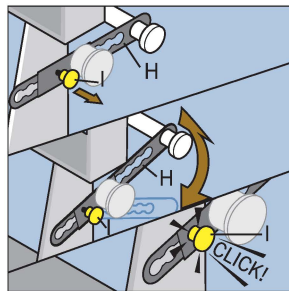
Slide and rotate the seat to align with the back of the wheelchair



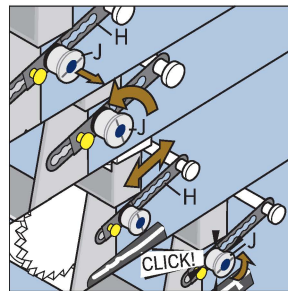
Now relock the seat. First make sure it is facing forward, then rotate plunger F 90° until it drops down. This prevents the seat from rotating



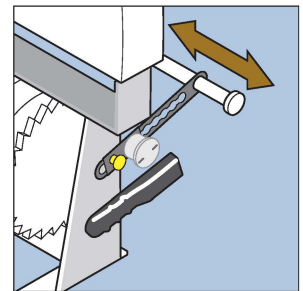
To lock the seat from sliding push clamp E towards the base to lock. D will automatically drop down into position. The seat should not be able to move



To adjust the flexi beam H to angle up or down to receive the wheelchair pull plunger I. While holding plunger I raise and lower H to your preferred angle then let go of I. I should snap in to lock the angle. (You may have to alter the angle of the beam to the closest point I will snap in). Repeat on the other side of seat base



To alter the length of flexi beam H pull out plunger J and rotate 90°. Slide beam H to your required length then turn back J so the marks line up with the length of the beam. J should click back into place to lock, if it does not adjust the length of H slightly till it does. Repeat on the other side of seat base

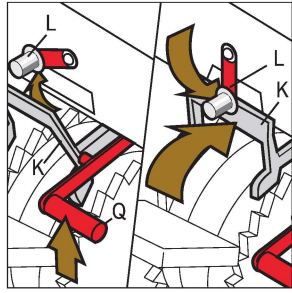


The flexi beam bars can be slid to the appropriate position to meet the wheelchair frame. Repeat on the other side of the seat

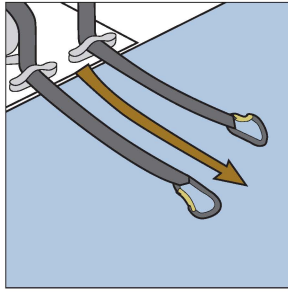
Continued on next page...

## ...Continued: Turning seat into wheelchair user mode

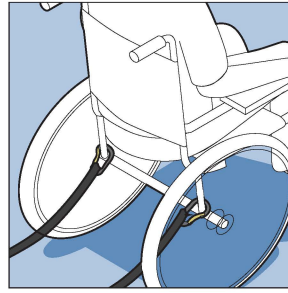
### 4: Securing the wheelchair and user



To release the webbing swing L from behind K. Next lift up red handle Q which will lift up connector bar K. Then push K forward and hold in position by rotating L down

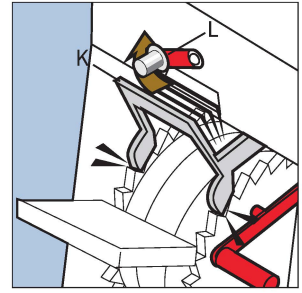


Pull the webbing out to **their fullest extents** from the front of the seat base

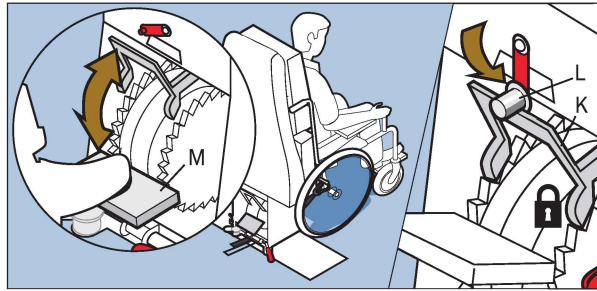


Attach the karabiners to the rear of the wheelchair frame as low as possible on manufacturer's recommended points

**Caution: Under no circumstances attach karabiners to the front of the wheelchair**

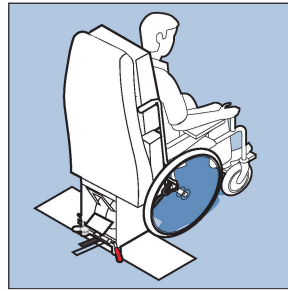


Engage webbing by rotating L upward to release K. Make sure K's dogs are engaged on the drum teeth

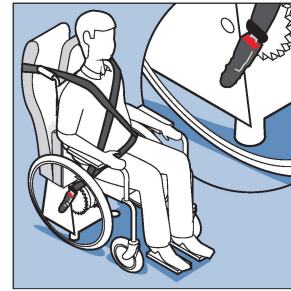


Operate large pedal M in an up and down motion to ratchet in the wheelchair until the wheelchair is a snug fit against the seat back and against the flexi beams

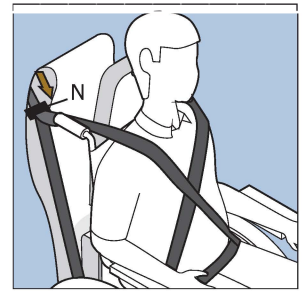
It is advisable to use the wheelchair handles during this process to guide the wheelchair as it reverses. Finally swing safety catch L behind K.



**Caution: There must be no forward or backward movement of the wheelchair once it has been secured**



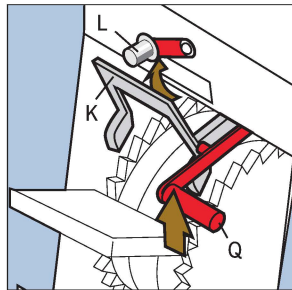
Secure the passenger using the two all age inertia belts. Take one belt and insert it into the buckle. Repeat using the other all age inertia belt and fixing it into the buckle on the other side of the seat



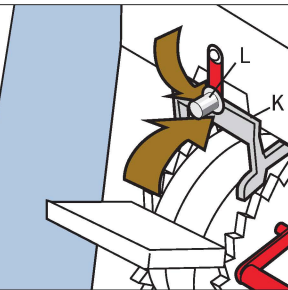
Position the age adjuster N (on both all age adjuster belts) to ensure webbing does not cut across the occupants neck

## Turning seat from wheelchair user mode to standard mode

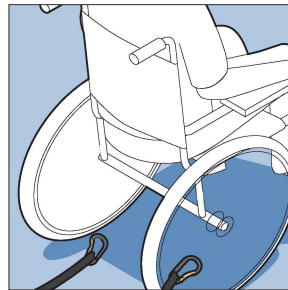
### Releasing the wheelchair and user and converting the RKR Mk2 to seat mode



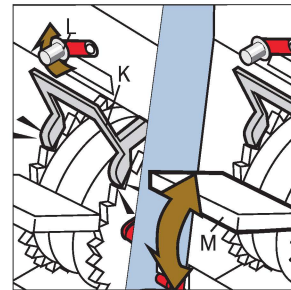
Detach the user from the all age belts. To release the webbing, swing L from behind K then lift up red handle Q to lift up connector bar K...



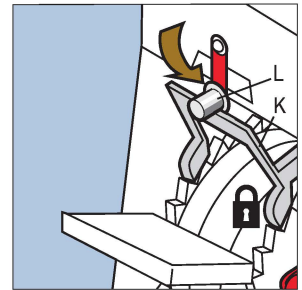
...Now using your hand push connector bar K as far as it will go and rotate red arm L down to hold it in place



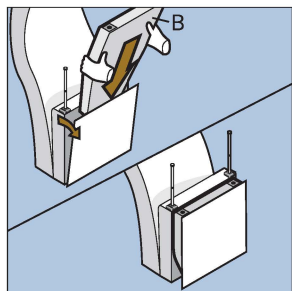
Extend the webbing **out to their fullest extents** from the front of the wheelchair base. Detach the karabiners from the rear of the wheelchair frame



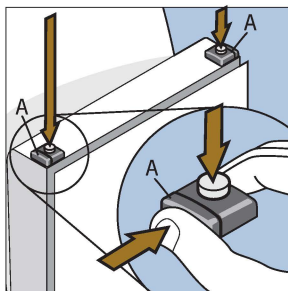
Engage webbing by rotating L upward to release K. Then retract the webbing by pumping foot pedal M



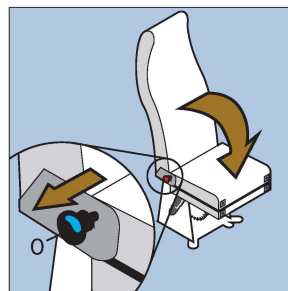
Then rotate safety catch L behind K



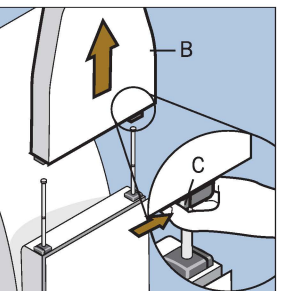
Store extension cushion B in the elastic pouch at the front of the seat squab



Squeeze A and push down the stalks till flush with the seat squab



To turn it into a seat pull out plunger O and lower seat squab at the same time



Squeeze C at one side of the extension cushion B and hold in while lifting off.